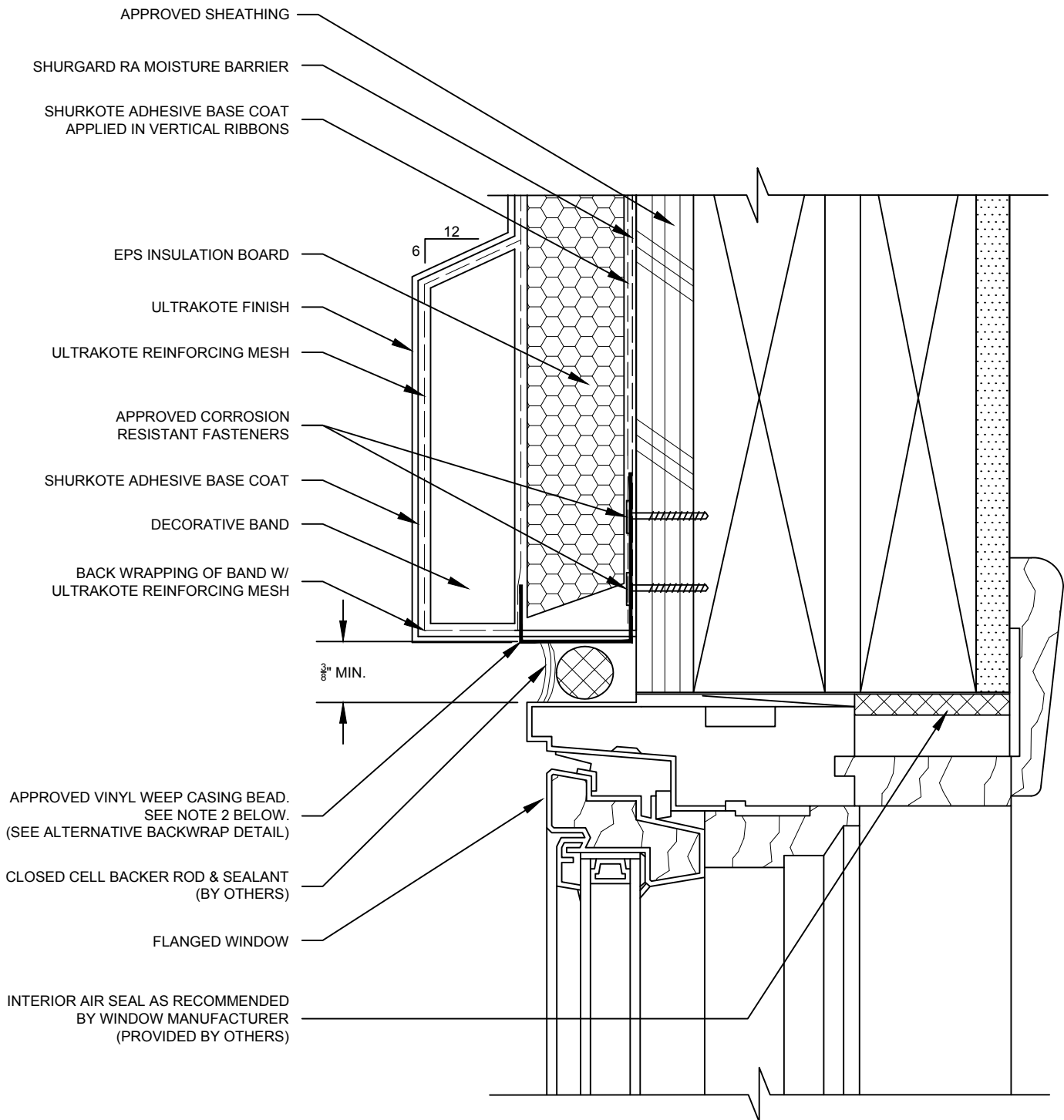


TYPICAL WINDOW HEAD - FLANGED WINDOW WITH BAND



NOTE:

1. MAINTAIN $\frac{1}{8}$ " SPACE BETWEEN BEVELED INSULATION AND WEEP CASING BEAD.
2. AT HORIZONTAL WALL SURFACES, INCLUDING LEDGES, CAPS, SILLS, ETC., A MINIMUM SLOPE OF 6 INCHES IN 12 INCHES IS REQUIRED.